

PLANNING AND URBAN MANAGEMENT AGENCY

Functions of the Agency

January 2022

The Planning and Urban Management Agency

The Planning and Urban Management Agency (PUMA) is a division of the Ministry of Works Transport and Infrastructure (MWTI). It is governed by the Planning and Urban Management Board (the Board) and the Division Head (ACEO PUMA), and is staffed by appointed officers in four sections: Strategic Planning, Sustainable Development, Urban Management and Compliance, Monitoring and Enforcement Sections (see figure below). PUMA operates under the *Planning and Urban Management Act 2004* (the Act), which regulates the procedures for assessment of developments, strategic planning, and enforcement measures.

communities; sustainable use of natural resources; economic growth; and equitable access to transport,



Apia is growing quickly. Over time, and with increasing development, there is a need to ensure proper strategic planning.

infrastructure, recreational facilities and jobs.

The Planning and Urban Management Board

The Board is chaired by the Minister of MWTI and has 8 members (5 community representatives and 4 government representatives) and is responsible for implementing the provisions of the Act. Board meetings are conducted monthly and members are tasked with assessing development consent applications for significant proposed developments, as well as approving planning policies and guidelines.

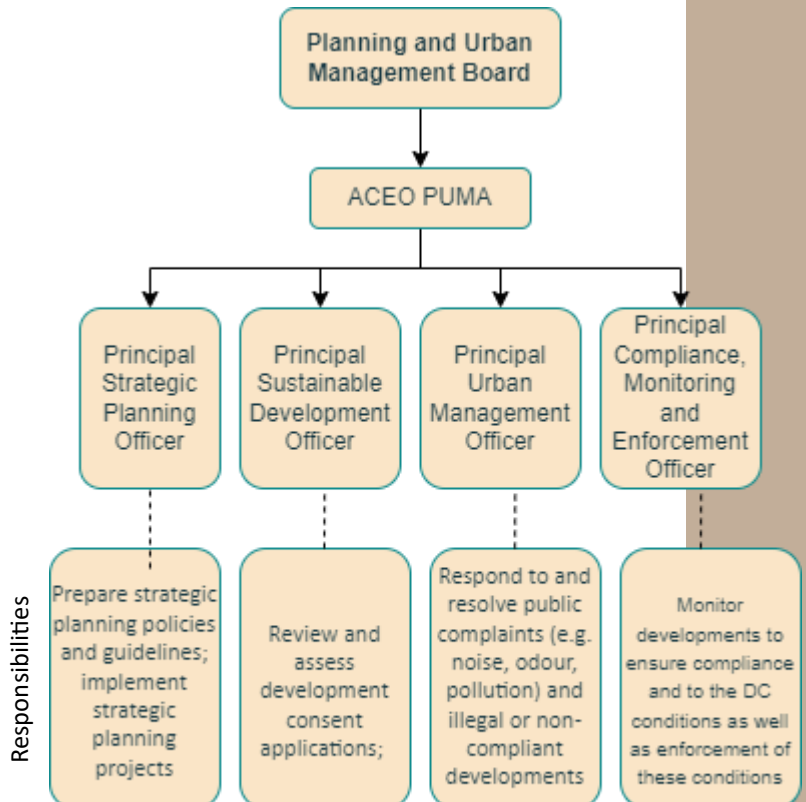
Why do we need planning?

Samoa needs strategic planning and development controls to balance demands for economic growth and investment with the need to protect the environment. Without proper planning, some of the following problems can exist in our country:

- increasing environmental issues (such as pollution, deforestation and erosion);
- flooding and poor drainage;
- incompatible land uses causing issues to neighboring land;
- traffic congestion; and
- increasing pressures on service infrastructure.

PUMA's role is to help progress appropriate and sustainable developments in both urban and rural areas. This ultimately leads to safe and healthy

Organizational structure



Responsibilities